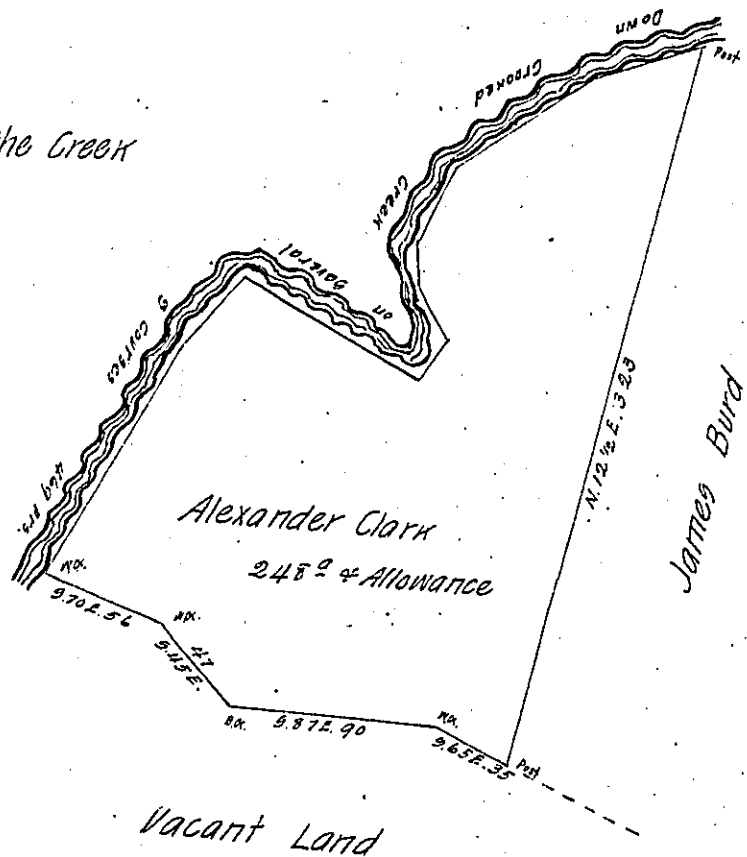


Courses & Distances Down the Creek

- 969 W. 52
  - 954 W. 70
  - 923 W. 38
  - 9. 8 E. 15
  - 932 E. 28
  - 931 W. 21
  - 11. 64 W. 89
  - 5. 42 W. 40
  - 9. 29 N. 116
- in all 469 perches



D-17-164

Survey'd to Alexander Clark on the 20<sup>th</sup> Day of October 1756 the above described Tract of two hundred & forty eight acres & allowance of six p. Cent. situate on the south side of Crooked Creek adjoining land of James Clark in Armstrong Township Westmoreland County By Warrant of the 24<sup>th</sup> Day of August 1756.

Joshua Elder D. S.

John Lukens Esqr & Gent

IN TESTIMONY that the above is a copy of the original remaining on file in the Department of Internal Affairs of Pennsylvania, made conformably to an Act of Assembly approved the 16th day of February, 1833, I have hereunto set my Hand and caused the Seal of said Department to be affixed at Harrisburg, this ninth day of May 1904

*Joseph P. Brown*  
 Secretary of Internal Affairs.